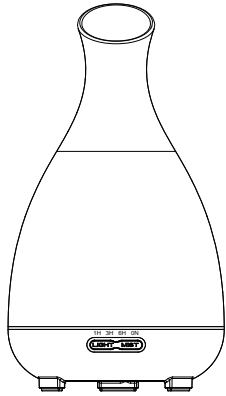


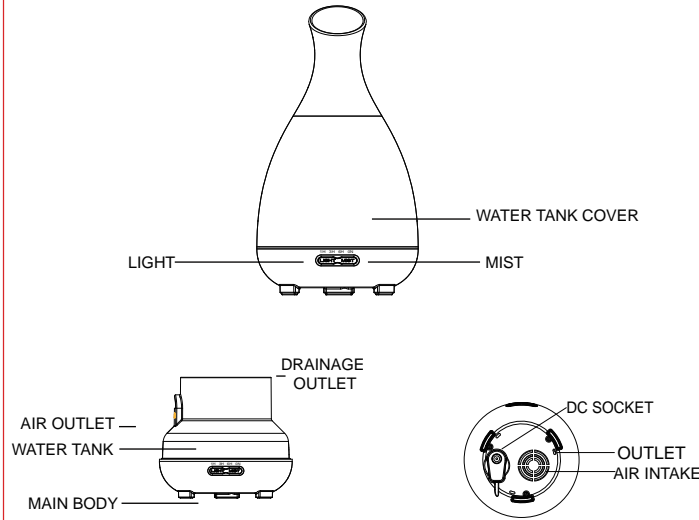
Aroma Diffuser User Manual



Model No.: IP-AD200-33-WOOD

Aroma Diffuser

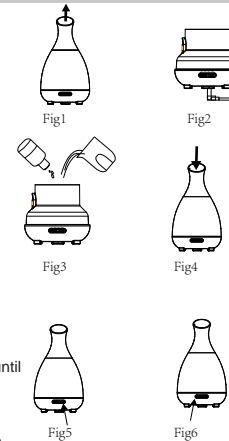
The InvisiPure aroma diffuser uses ultrasonic technology to produce ultrafine mist in the air. The unit is safe to use with essential oils.



Aroma Diffuser

OPERATION

- Place unit on a flat surface. Remove the water tank cover. **Fig1**
- Connect the AC adapter to the base. **Fig2**
- Use the included measuring cup and add water to the tank (Do not put water above the max level line). We recommend using distilled or filtered water for best results. **Fig3**
- Add 1-4 drops of essential oils.
- Place the water tank cover on top. **Fig4**
- Make sure there is no water on the outside or around the aroma diffuser or the electrical cord.
- Connect the AC adapter to the electrical outlet.
- Press the Mist button to turn on the unit. You have the option to select timer (1 hour, 3 hours, or 6 hours) or ON for constant on. **Fig5**
- You can choose from two mist output levels by pressing down and holding the Mist button. You will hear 1 or 2 beeps for high and low mist output. Press and hold until you hear the beep sound then depress the button.
- Press the Light button to turn on the multi color LED lights. There are 7 colors that will rotate. If you prefer a certain color, press and depress the button until you see the color you like. You can choose various color choices with dark and light versions of each color (orange, red, lime green, green, light blue, dark blue, purple, white). To turn off the light option, continue pressing/depressing until the light turns off and you hear 2 beep noises. **Fig6**
- The unit will automatically shut off if the water level in the tank is low.



Aroma Diffuser

NOTES

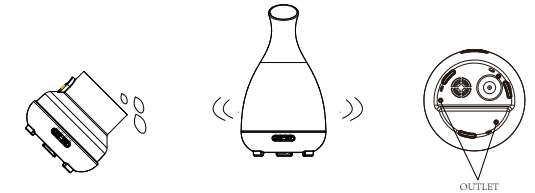
- The amount and intensity of mist produced will vary, but this is not unusual and should not be considered as a fault.
- Factors that affect this include water type, humidity, temperature, air currents.
- Auto power off when water runs out.
- Only use 100% natural essential oils. Chemical ingredients, flavors, or impurities may cause damage to the product.
- We recommend cleaning the unit after each use.

ACCIDENTAL LEKAGE to ACCIDENTAL SPILL

In the event you accidentally knock over the unit, please follow the following steps.

- Unplug the AC adapter from the electrical outlet.
- Pour out any remaining water from the water tank.
- Leave the unit and let it dry for at least 24 hours.

*Note: These steps do not guarantee your unit will operate if there is internal electronic damage.



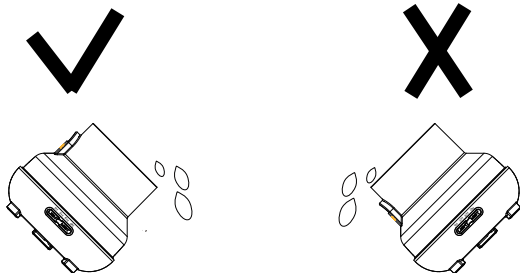
Aroma Diffuser

MAINTENANCE

We recommend you clean the unit after each use. Below is our recommendation to clean the unit.

- Unplug the AC adapter from the unit.
- Pour out any remaining water from the tank. Place the unit on a flat surface.
- Add a small amount of water and distilled vinegar in the tank. Use a soft cloth towel and gently clean the tank. Be careful not to spill the water/vinegar. You may also use mild liquid soap.
- Use a small cotton swab to clean hard to reach areas if necessary.

*Caution: Do not use harsh chemicals or cleansers which may contain enzymes or acid which will damage the unit.



Aroma Diffuser

PRECAUTIONS

Please check the following to avoid malfunction of the unit.

- Do not overfill the water tank above the Max line.
- Do not turn on the unit when there is no water in the tank or the cover is off.
- Always place the cover on when the unit is ready for use and turned on.
- Do not touch the ultrasonic vibration plate.
- Clean and maintain the unit regularly as stated in the Maintenance section.
- Always unplug the AC adapter from the electrical outlet when not in use or during cleaning.
- Keep the unit clean and dry when not in use to prevent mold.
- Some essential oils can stain the tank and cover. The mist may also stain surrounding areas. Please check with the essential oil manufacturer to properly care for these situations.
- We recommend you use the included measuring cup to fill the tank. Do not place the tank under a water faucet or direct water source to prevent water entering the base or the air outlet.
- Do not place the unit near furniture, clothing, walls, etc during use.
- Keep the unit away from direct sunlight, heat sources, air conditioner, or fans.
- Always keep the unit on a flat and stable surface. Do not place on top of carpets, rugs, or any unstable area.
- Keep away from any electronic device or equipment such as phone, TV, appliances.
- Do not tip the product as this may cause water to enter the inside of the base and damage the internal electronics.
- We recommend using the unit approximately a maximum of 6 hours and wait at least 1 hour to restart the unit.
- For best results, use filtered or distilled water. Do not use mineral water, sparkling water, or other liquids.
- Adult supervision is required when used in close vicinity to children. Keep out of reach of children, pets, or any person with reduced physical, sensory or mental capabilities.
- Never use the unit with another AC adapter.
- Keep cords clear of walkways and do not forcefully unplug the unit from the electrical outlet.
- If smoke or burning smell is detected, unplug the unit immediately.

Aroma Diffuser

TROUBLESHOOTING

Please refer to the table below in the event of the product operating abnormally:

If product doesn't work well, please refer to the following points before requesting repairs:	
Will not switch on or off	<ul style="list-style-type: none"> Water level in tank is low. Please refill it. Check and make sure the AC adapter is properly connected to the base and electrical outlet.
No mist or abnormal mist	<ul style="list-style-type: none"> Water level in tank is low. Please refill it. Ultrasonic plate may need cleaning. Make sure the cover is properly placed on top of the base.
Water leakage from the unit	<ul style="list-style-type: none"> Properly place the cover on the base. Confirm there are no blockages from the top mist output opening on the cover. Make sure the unit is not cracked. If it is, turn it off and contact the manufacturer. Low temperature or high humidity may cause increased condensation.

Aroma Diffuser

SPECIFICATIONS

Dimensions	Approx. 5.01 x 5.01 x 9.42 inches (L x W x H)
Weight(excluding adaptor)	Approx. .80 lbs
Power: Input/Output	AC100-240V 50.60HZ / DC 24V 650MA
Length of cord	Approx. 70 inches
Electric consumption	Approx. 14W
Time Mode	1H/3H/6H/ON
Tank Capacity	200ML
Accessories	AC Adapter and manual

WARRANTY & SERVICE

We guarantee the unit to be free from defects in material or workmanship for a period of one (1) year from the date of purchase. Operating this unit with an adapter other than the one supplied or any attempts made to service or modify the unit, will VOID THE WARRANTY. For your convenience, please record the complete model number and the date of purchase below, and attach your receipt as proof of purchase.

Serial No.: _____
 Date of Purchase: _____
 Name and address of Purchaser: _____

 Telephone: _____

Aroma Diffuser